

# LINEPULS

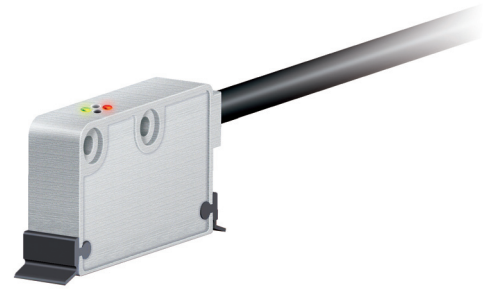
Magnetic sensor with integrated converter

Series

SME52



- 2 integrated limit switch sensors
- Standard sensor for linear axis
- Gap clearance up to 2.0 mm
- Lika hi-flex sensor cable
- Status LED for clearance error
- Reference and limit switch marks to be installed along the magnetic tape
- Optional tape cleaning wipers



SME52

## ENVIRONMENTAL SPECIFICATIONS

Operating temperature range:	-25°C +85°C (-13°F +185°F)
Storage temperature range:	-40°C +100°C (-40°F +212°F)
Protection:	IP67

## MECHANICAL SPECIFICATIONS

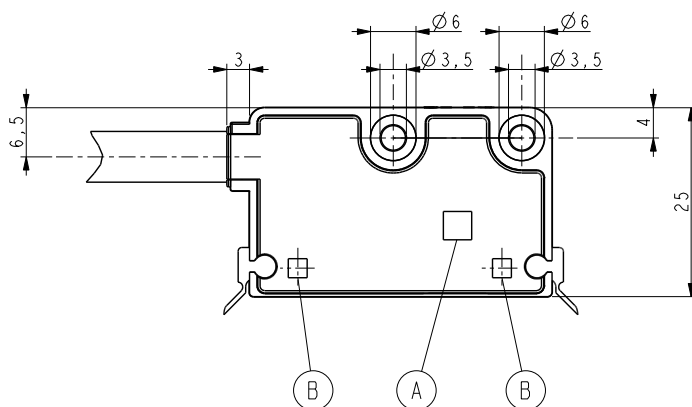
Dimensions:	see drawing
Housing:	die cast aluminium, UNI EN AC-46100
Connection:	Lika Hi-flex cable M10, 2,0 m
Gap sensor-magnetic tape (without cover strip):	0,1 ÷ 2,0 mm
Travel speed:	16 m/s max. (mechanical)
Resolution:	0,05 / 0,025 / 0,01 / 0,005 mm
System accuracy:	±15 µm max.
Repeatability:	±1 increment

## ELECTRICAL SPECIFICATIONS

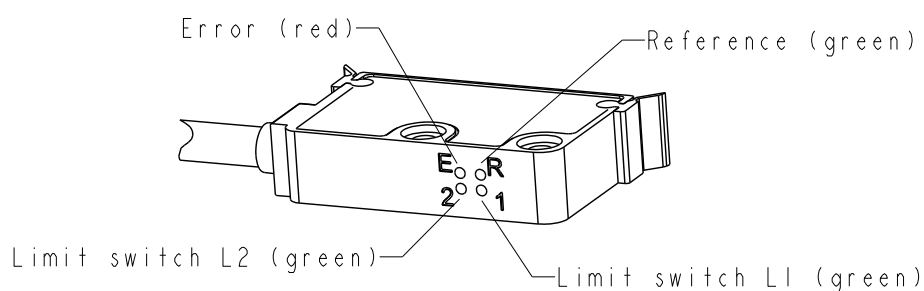
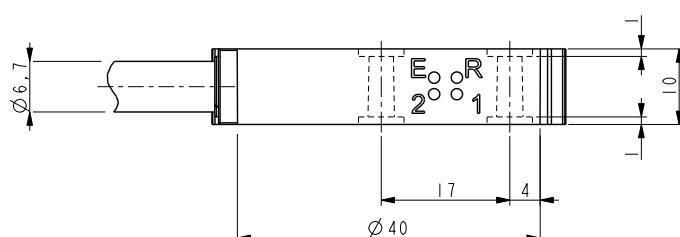
Power supply:	+5Vdc ±5%, +10Vdc ÷ +30Vdc
Output circuits:	Line Driver, Push-Pull
Output signals:	AB0 /AB0 + LS1, LS2 (open-collector@50 mA)
Counting frequency:	acc. to edge distance setting
Output current (per channel):	40 mA max.
Input current:	80 mA max.
EMC:	acc. to EN 61000-6-2 level 3
Protection:	against inversion of polarity (except 5Vdc version) and short circuit

## ACCESSORIES

MT50:	Magnetic tape
LKM-1309/5:	Reference pole support
LKM-1309/LS	Limit switch support
KIT LKM-1440:	Tape terminals
KIT WIPERS:	Wipers for SMExx/SMSxx, 10 pcs
PS1:	Protection profile



A	Reference Sensor
B	Limit Switch (L1, L2)



SME52

Order code

Additional code (optional)

SME52	-	XX a	-	X b	-	XX c	-	X d	-	XX e	-	X f	/Sxxx g
-------	---	---------	---	--------	---	---------	---	--------	---	---------	---	--------	------------

<p><b>a) OUTPUT CIRCUITS</b>                  Y = Push-Pull (AB)                  YC = Push-Pull (AB, /AB)                  L = Line Driver (AB, /AB)</p> <p><b>b) POWER SUPPLY</b>                  1 = +5Vdc ±5% (L)                  2 = +10Vdc ÷ +30Vdc (Y and L)</p>	<p><b>c) RESOLUTION</b>                  50 = 0,05 mm (50 µm)                  25 = 0,025 mm (25 µm)                  10 = 0,01 mm (10 µm)                  5 = 0,005 mm (5 µm)</p> <p><b>d) INDEX</b>                  R = unique reference signal</p> <p><b>e) CONNECTIONS</b>                  L2 = cable output 2 m                  L5 = cable output 5 m                  Lx = cable length on request</p>	<p><b>f) EDGE DISTANCE</b>                  H = 0,3 µs min. edge distance                  J = 0,5 µs at output                  A = 1 µs                  B = 2 µs                  C = 4 µs                  D = 8 µs                  E = 16 µs                  F = 25 µs</p>	<p><b>g) CUSTOM VERSION</b></p>
---	--	---	---------------------------------