

LINEPULS

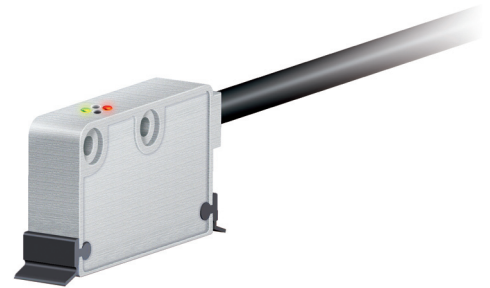
Magnetic sensor with SIN/COS output

Series

SMS12



- 2 integrated limit switch sensors
- Magnetic sensor for linear motors
- Sine-cosine 1Vpp real-time output
- Unaffected by dust, debris or liquids, IP67
- Status LED for clearance error and A, B signals
- Reference and limit switch marks to be installed along the magnetic tape
- Optional tape cleaning wipers



SMS12

ENVIRONMENTAL SPECIFICATIONS

Operating temperature range:	-25°C +85°C (-13°F +185°F)
Storage temperature range:	-40°C +100°C (-40°F +212°F)
Protection:	IP67

MECHANICAL SPECIFICATIONS

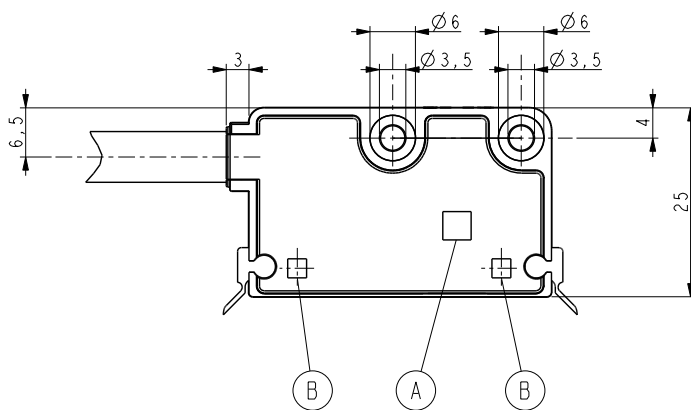
Dimensions:	see drawing
Housing:	die cast aluminium, UNI EN AC-46100
Connection:	Lika Hi-flex cable M10, 2,0 m
Gap sensor-magnetic tape (without cover strip):	0,1 ÷ 0,5 mm
Travel speed:	16 m/s max. (mechanical)
Period length:	1000 µm
Repeatability:	max 1% of period length

ELECTRICAL SPECIFICATIONS

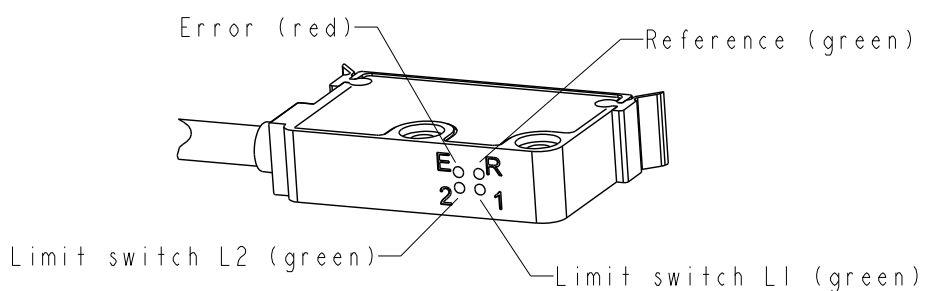
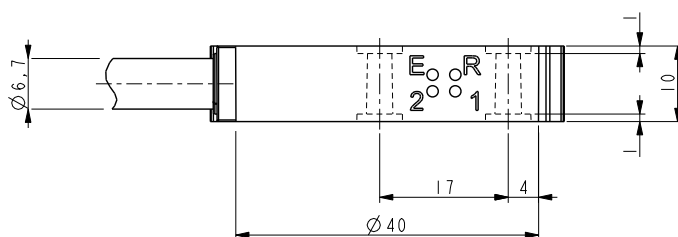
Power supply:	+5Vdc ±5%
Output circuits:	1Vpp
Output signals:	sine/cosine, AB0 /AB0 + LS1, LS2 (open-collector@50 mA)
Counting frequency:	8 kHz max. (~ 8 m/s)
Output current (per channel):	40 mA max.
Input current:	80 mA max.
EMC:	acc. to EN 61000-6-2 level 3
Protection:	against short circuit

ACCESSORIES

MT10:	Magnetic tape
LKM-1309/1:	Reference pole support
LKM-1309/LS	Limit switch support
KIT LKM-1440:	Tape terminals
KIT WIPERS:	Wipers for SMExx/SMSxx, 10 pcs
PS1:	Protection profile



A	Reference Sensor
B	Limit Switch (L1, L2)



SMS12

Order code

Additional code (optional)

SMS12	-	X Ⓐ	-	X Ⓑ	-	X Ⓒ	-	XX Ⓓ	/Sxxx Ⓔ
-------	---	--------	---	--------	---	--------	---	---------	------------

<p>Ⓐ OUTPUT CIRCUITS V = sin/cos 1Vpp</p> <p>Ⓑ POWER SUPPLY 1 = +5Vdc ±5%</p>	<p>Ⓒ INDEX R = unique reference signal (RS422) T = unique reference signal (1Vpp)</p>	<p>Ⓓ CONNECTIONS L2 = cable output 2 m L5 = cable output 5 m Lx = cable length on request</p>	<p>Ⓔ CUSTOM VERSION</p>
---	---	---	-------------------------